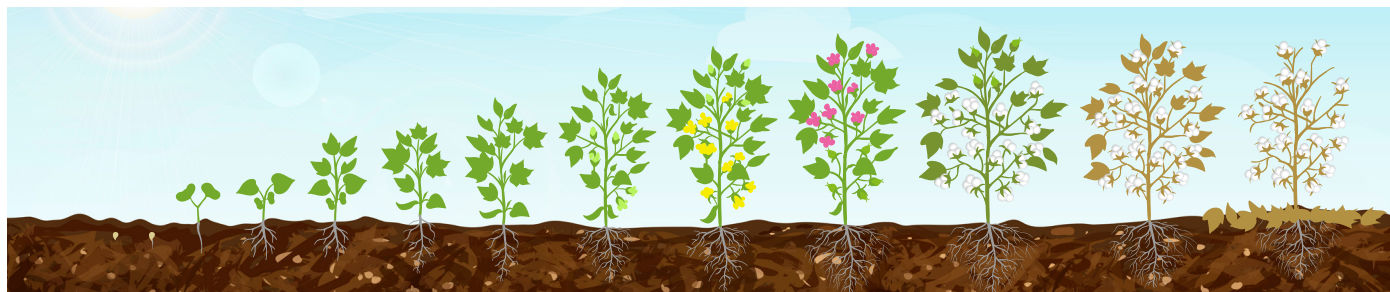


# ADVANCED PROTECTION PROGRAM



## SATELLITE® FLEX

### SATELLITE HYDROCAP

Pre-plant prior to crop emergence for residual control of small-seeded broadleaves and grasses.

### INTERLINE®

### INTERLINE + glyphosate

### DICAMBA

### MOCCASIN® II PLUS

Great tank-mix partner for extended residual control.

### PIX® WSG

Start application at match-head-square growth stage for managing cotton growth.

ADIOS is a harvest aid used for defoliation prior to harvest.

### ADIOS®

## USE RATES

SATELLITE HYDROCAP		
Soil Texture	Conv. Tillage Pints/A	No Till Pints/A
Course	1.0–2.0 pt/A	2.0 pt/A
Medium	2.0 pt/A	3.0 pt/A
Fine	3.0 pt/A	4.0 pt/A

SATELLITE FLEX		
Soil Texture	Conv. Tillage Pints/A	No Till Pints/A
Course	1.1–2.2 pt/A	1.1–2.2 pt/A
Medium	1.7–2.2 pt/A	1.7–3.4 pt/A
Fine	2.2–3.4 pt/A	3.4–4.5 pt/A

INTERLINE	
Maximum single application	43 fl oz/A
Standard in-season application	32 fl oz/A

MOCCASIN II PLUS	
Geography	Pints/A
AR, KS, LA, MO, MS, TN	½–1.33 pt/A
AZ, CA, NM, OK, TX and clay soil in AR before August	1.0–1.33 pt/A
AL, FL, GA, NC, SC, VA	1.0–1.33 pt/A

PIX WSG	
See label for growth stage specific rate	0.1–1.2 oz
Do not apply more than 2.35 oz per year (1# PIX WSG = 2.5 gal of 4.2% mepiquat chloride)	

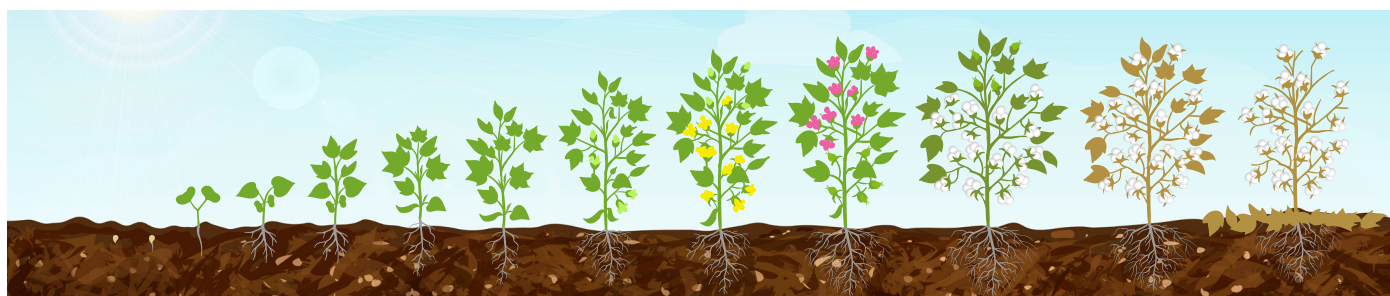
ADIOS	
6.4–16.0 fl oz/A	
Do not apply more than 1.0 pt or 16 fl oz/A in single year	

## NEXGEN® XTENDFLEX® WEED MANAGEMENT GUIDE

XTENDFLEX trait includes tolerance to glufosinate, glyphosate and dicamba.

- Start clean, stay clean by applying two or more pre-emergence residual herbicide MOAs (modes of action) prior to or at planting.
  - Apply SATELLITE HYDROCAP or SATELLITE FLEX herbicide in combination with other pre-applied herbicides, as region specifies.
  - Consider adding paraquat plus surfactant to aid in burndown applications at planting.
- Apply first post application of INTERLINE herbicide plus glyphosate (up to 2–3 cotton leaf stage) or dicamba for early weed control.
- INTERLINE herbicide may be tank-mixed with glyphosate or other herbicides like MOCCASIN II PLUS that add residual weed control.
  - Minimum water volume should be 15 gallons per acre with AMS.
  - When tank mixing INTERLINE and MOCCASIN II PLUS, the addition of fluid fertilizers, other adjuvants, oils, surfactants, and any other products not listed as compatible can cause injury when applied with post emergent applications of MOCCASIN II PLUS.
  - Nozzles that produce medium droplet size provide optimal coverage.
  - If weed population is dense or weeds exceed the maximum 3- to 4-inch height, use up to 43 fl oz/acre of INTERLINE herbicide in 20 gallons of water volume with AMS.
  - Apply sequential application within 7 days, if needed.





**COTTOLYST™  
ENHANCED**

Broad-spectrum control of early season insect and seedling diseases.

**ARGYLE® OD**

**ACENTHRIN®**

To optimize preservation of beneficial insects, start insecticide application with ARGYLE OD insecticide, followed by ACENTHRIN insecticide.

## SEED TREATMENT

CATEGORY	ACTIVE INGREDIENT (BRAND)	BENEFIT
Insecticides	<b>Imidacloprid</b>	Class-leading insecticide offering an extended window for controlling early-season piercing/sucking insects, in addition to populations of thrips resistant to thiamethoxam.
	<b>Acephate</b>	Excellent addition to imidacloprid to aid in quick knock-down of thrips while adding a second mode of action for resistance management.
Fungicides	<b>Metalaxyl</b>	Essential in cool and wet conditions — aiding in successful stand establishment through control of <i>Pythium</i> pathogens.
	<b>Ipconazole (RANCONA®)</b>	Excellent systemic & contact control of seed & soil-borne fungi which cause decay, damping-off & seedling blight (esp. <i>Rhizoctonia</i> & <i>Fusarium</i> ).
	<b>Azoxystrobin</b>	Added systemic control of <i>Pythium</i> seedling blight & seedling <i>Rhizoctonia</i> damping-off.
	<b>Myclobutanil</b>	Protect against sore shin ( <i>Rhizoctonia</i> ) & black root rot ( <i>Thielaviopsis basicola</i> ) which impairs good cotton seed germination & seedling development.
	<b>Fludioxonil</b>	Contact protection against seed & soil-borne fungi (esp. <i>Rhizoctonia</i> & <i>Fusarium</i> ).
Biostimulant	<b>K5™</b>	Amino acid-based biostimulant resulting in enhanced nutrient utilization and early vigor during emergence.

## ARGYLE OD INSECTICIDE

Apply initial application of ARGYLE OD insecticide at a use rate of 6 to 7 fl oz/acre starting around pinhead square/match-head square, or earlier if insect species being treated reaches economic threshold. If pest populations are significantly above economic threshold, increase use rate to 8 to 9 fl oz/acre. For an insect program approach, follow ARGYLE OD application with ACENTHRIN insecticide at bloom timing, using 1 lb/acre.

Applications allowed every 7 days. PHI is 28 days.

Maximum applications per calendar year are 4; maximum 40 fl oz per calendar year per acre.

**Key insects controlled:** aphid spp., armyworm, bean leaf beetle, bollworm, cabbage looper, fleahopper, loopers spp., lygus spp., plant bug, stink bug spp., thrips spp., tobacco budworm, spider mite, caterpillars, whitefly (at 9 fl oz/acre).

## ACENTHRIN INSECTICIDE

Patented, dual mode-of-action insecticide that provides an excellent resistance management option. The combined benefit of quick knockdown with systemic characteristics offers improved residual and expanded pest spectrum control. Recommended use rate is 1 lb/acre.

**Key insects controlled:** aphid, bollworm, fleahopper, plant bug, stink bug spp., thrips spp.



**ACENTHRIN and ARGYLE OD are restricted-use pesticides. Always read and follow label directions.** NexGen and CottolyST are trademarks of Americot, Inc. XtendFlex is a registered trademark of Bayer Group. K5 is a trademark of Kannar Earth Science, Ltd. UPL, UPL logo, OpenAg and all other products are trademarks of a UPL Corporation Limited Group Company. ©2020 UPL Corporation Limited Group Company. CTNR-2031H